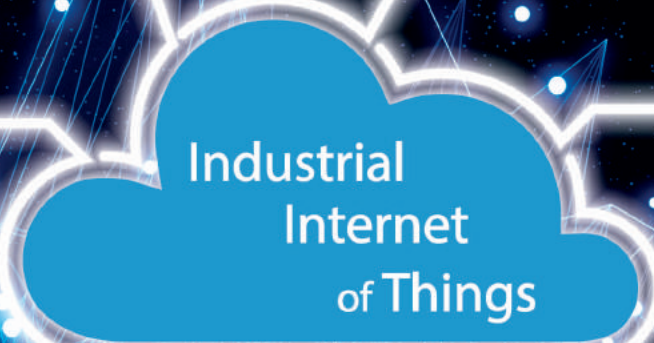


# ENTECH

Difference For Greater Value

## Smart Industrial IoT Solution



SAFETY  
ENERGY  
ENVIRONMENT  
PROCESS CONTROL



## รู้จักกับเอ็นเทค



### ENTECH INDUSTRIAL SOLUTION CO., LTD.

บริษัท เอ็นเทค อินดัสเทรียล โซลูชั่น จำกัด ก่อตั้งขึ้นในปี 2536 ดำเนินธุรกิจนำเข้าและจำหน่ายเครื่องมือวัดและวิเคราะห์สำหรับงานอุตสาหกรรม พลังงาน ความปลอดภัยและสิ่งแวดล้อม (Analytical Instrumentation) ในปัจจุบันได้ขยายธุรกิจไปในส่วนธุรกิจด้านระบบงานวิศวกรรมของอุปกรณ์เครื่องมือวัดและควบคุม กระบวนการ (System Integration) หน่วยธุรกิจระบบรักษาความปลอดภัย กล้องวงจรปิด รถดับเพลิง อุปกรณ์บรรเทาสาธารณภัยและกู้ภัย (Security & Rescue) นอกจากนี้ยังมีหน่วยงานให้บริการหลังการขาย บริการซ่อม สอบเทียบเครื่องมือวัดโดยห้องปฏิบัติการมาตรฐาน ISO 17025 ให้เช่าเครื่องมือวัด

เพื่อให้องค์กรเติบโตอย่างต่อเนื่อง และยั่งยืน บริษัทฯ ได้ให้ความสำคัญกับการพัฒนาพนักงานและระบบคุณภาพอย่างต่อเนื่องโดยคำนึงถึงผู้มีส่วนได้ส่วนเสีย ทุกกลุ่มทั้งพนักงาน ลูกค้า คู่ค้า ผู้ถือหุ้น และสังคม



## Process Monitoring Solutions

- เครื่องวัดความชื้นในกระบวนการผลิตแบบต่อเนื่อง (Moisture Analyzer)
- เครื่องวัดอัตราการไหลของเหลว ไอน้ำ และก๊าซ (Liquid/Steam/Gas Flow Meter)
- เครื่องวัดอัตราการไหลของอากาศอัด (Compressed Air Flow Meter)
- เครื่องวัดความดัน (Pressure Sensor)
- เครื่องวัดอุณหภูมิจุดน้ำค้าง (Dew point Sensor)
- เครื่องนับจำนวนอนุภาคฝุ่น (Particle Counter)
- เครื่องวัดก๊าซออกซิเจนในกระบวนการผลิต (Oxygen Analyzer)
- เครื่องวัดก๊าซชีวภาพ (Biogas Analyzer)
- กล้องตรวจวัดอุณหภูมิในเตาเผา (High Temperature Camera)
- กล้องถ่ายภาพความร้อนแบบต่อเนื่อง (Online Real-time Infrared Camera)
- ระบบตรวจวัดก๊าซไอเสียจากปล่องระบายแบบต่อเนื่อง (Continuous Emission Monitoring System)



## Environmental Monitoring Solutions

- เครื่องตรวจวัดฝุ่นในปล่องระบาย (Opacity/Dust Monitoring System)
- เครื่องวัดฝุ่นในบรรยากาศ (Dust Analyzer)
- สถานีตรวจวัดคุณภาพอากาศขนาดย่อม (Air Pollution Station)
- สถานีตรวจวัดทางอุตุนิยมวิทยา (Meteorological Station)
- สถานีตรวจวัดสารอินทรีย์ระเหยง่ายในบรรยากาศ (VOCs Monitoring Station)
- เครื่องมือตรวจวัดคุณภาพน้ำแบบต่อเนื่อง (Online Water Quality Analyzer)
- เครื่องวัดน้ำมันในน้ำ (Oil in Water Analyzer)
- เครื่องตรวจวัดระดับและอัตราการไหลของน้ำ (Level and Liquid Flow Meter)
- ระบบกำจัดน้ำจากถังเก็บน้ำมัน (Automatic Water Drainage from Oil Storage Tank)



## Safety and Climate Monitoring Solutions

- ระบบตรวจวัดก๊าซรั่ว (Gas Leak Monitoring System)
- ระบบวัดอุณหภูมิและความชื้นสัมพัทธ์ (Temperature and Humidity Monitoring System)
- กล้องอินฟราเรดสำหรับตรวจจับการรั่วของก๊าซ (Fugitive Emissions Detection Automatic Camera)
- ระบบดับเพลิงอัตโนมัติ (Automatic Fire Extinguishing System)







## Biogas 3000

### Fixed Biogas and Landfill Gas Analyser / Anaerobic Digestion

The ATEX and IECEx certified BIOGAS 3000 builds on field proven, robust gas analysis technology to offer cost effective online monitoring with local data outputs.

- CH<sub>4</sub> CO<sub>2</sub> & O<sub>2</sub> - standard measurements
- H<sub>2</sub>S, H<sub>2</sub> and CO - choice of up to two optional measurements
- Modular design enabling hot-swap for serviceability and onsite maintenance
- User calibration function to maintain accuracy & ensure data reliability in extreme temperatures
- ATEX and IECEx certified for use in potentially explosive gas atmospheres - zone 2
- ISO / IEC 17025 calibration for optimal accuracy
- Continuous monitoring option
- Up to 4 sample points to monitor the complete gas control process
- IP65 rated for weather proofing
- Built in liquid level monitoring with a dedicated alarm to inform the user that the contents of the catchpot requires emptying or an optional automated moisture removal drain
- Gas alarms & fault notifications
- 6 x 4-20mA outputs
- Modbus RTU communication
- Optional Profibus and Profinet communication



Measuring Range	
CH <sub>4</sub>	0 - 100% Vol.
CO <sub>2</sub>	0 - 100% Vol.
O <sub>2</sub>	0 - 25% Vol.
H <sub>2</sub> S	0 - 50 ppm, 0 - 200 ppm, 0 - 500 ppm, 0 - 1,000 ppm, 0 - 5,000 ppm or 0 - 10,000 ppm
H <sub>2</sub>	0 - 1,000 ppm
CO	0 - 1,000 ppm





## VPFlowScope® in-line

The VPFlowScope® in-line is the ideal flow meter for point of use consumption measurement. It measures mass flow, temperature and pressure simultaneously and in both directions.

- Thermabridge™ technology
- High dynamic range
- Three sensors in one instrument
- Standard Modbus and 4 ... 20 mA
- Bi-directional
- Quick return on investment



## VPFlowScope Probe

The VPFlowScope® Probe measures mass flow, temperature and pressure simultaneously. This probe can handle various diameters and measures in both directions.

- Thermabridge™ technology
- High dynamic range
- Three sensors in one instrument
- Standard Modbus and 4 ... 20 mA
- Bi-directional
- Quick return on investment

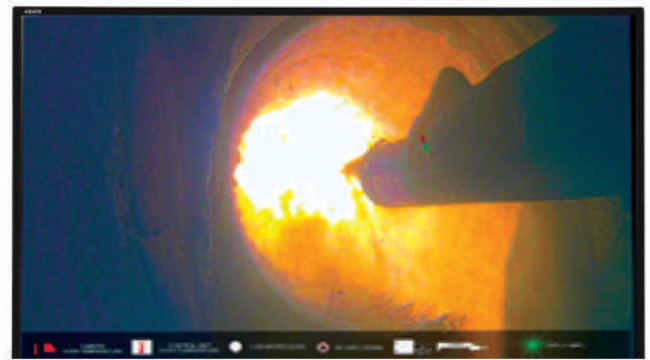
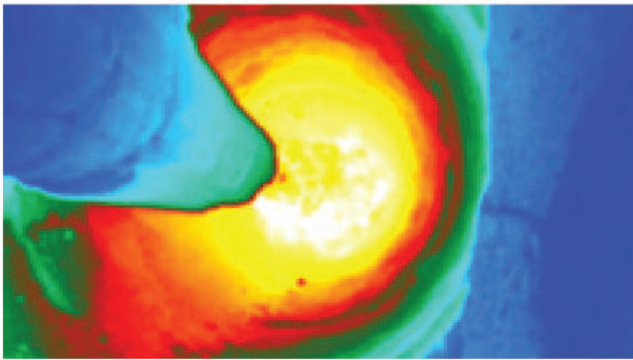


## VPFlowScope DP

The VPFlowScope® DP measures mass flow, temperature and pressure simultaneously and is optimized for wet compressed air measurements.

- For wet compressed air
- Three sensors in one instrument
- Standard Modbus and 4 ... 20 mA
- Bi-directional

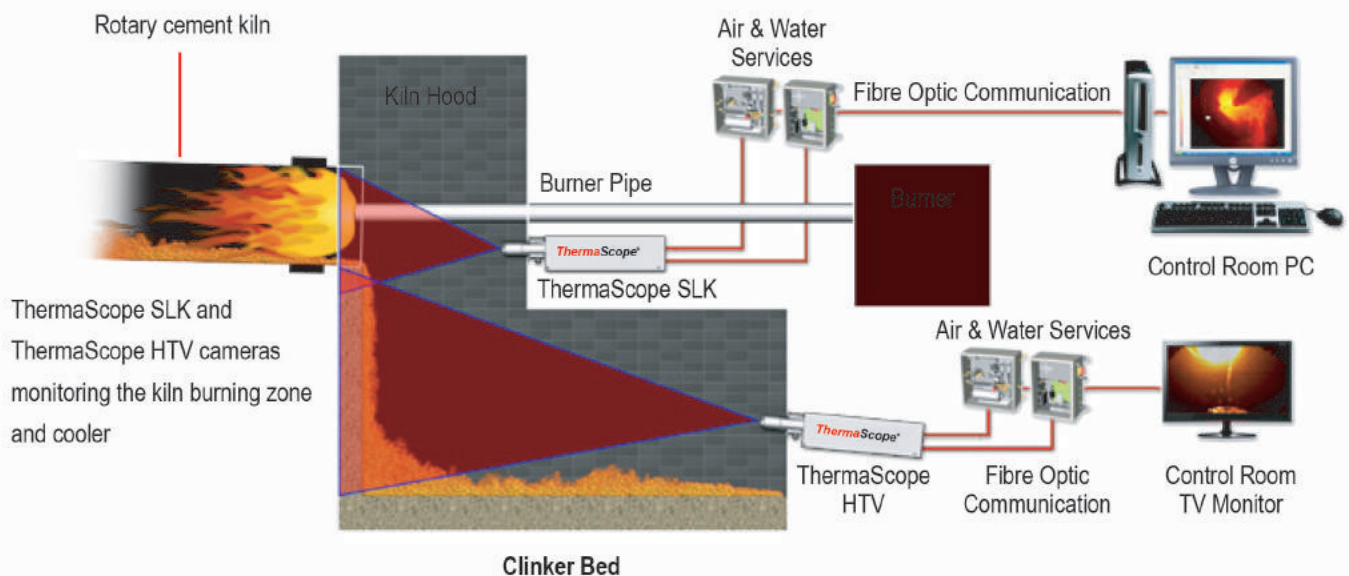




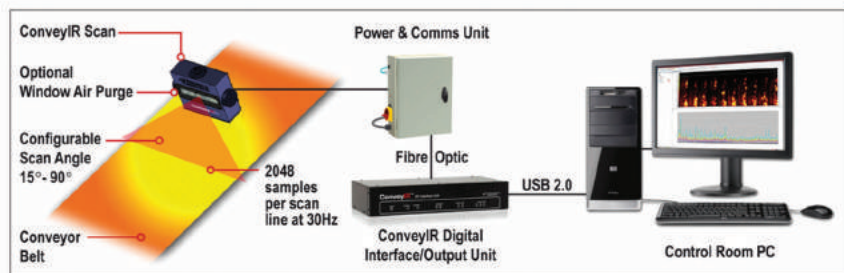
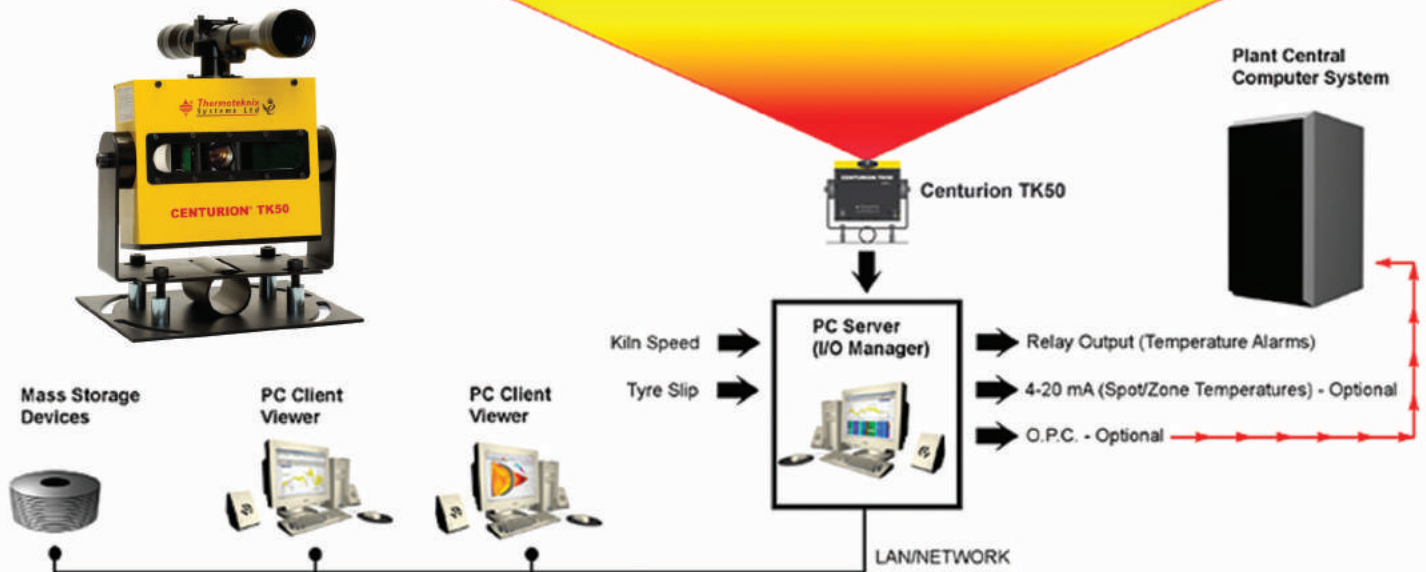
## ThermalScope HD Kiln and Cooler Camera Video

กล้องถ่ายภาพความร้อนและกล้องวิดีโอสำหรับเตาเผา

### Typical ThermaScope SLK and ThermaScope HTV camera setup on a cement kiln:





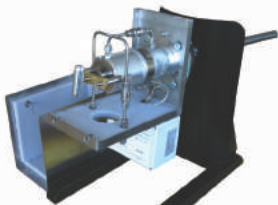






# Gas Sampling and Conditionnign System

ระบบปรับสภาพก๊าซสำหรับเครื่องวิเคราะห์ก๊าซแบบต่อเนื่อง



**Gas Sample Probe**

- Convenient filter replacement
- Rapid availability
- Low maintenance operation



**Heated Sample Line**

- Replaces rigid connections and connection elements, which would need extra heating and insulation otherwise
- Convenient tool change
- Low maintenance operation



**Sample Gas Compressor Cooler**

- Extremely precise long term stable
- dew point even under varying loads
- High flow rates and water vapour
- dew points possible
- Easy to change heat exchangers
- Continuous condensate removal
- Low maintenance operation
- Easy to maintain design



**Compact Sample Gas Pumps**

- Reliable continuous sample gas delivery
- No alteration of sample gas
- High suction power
- Easy mounting and integration in gas analysis systems
- Long life time
- Maintenance free construction
- Corrosion resistant Gas tight





## INFRALYT80

The INFRALYT 80 is a customer specific configurable gas analyzer for applications at industry and laboratory. It measures up to 8 gases at once, special features are the simple touch configuration and the high stability. By combination of detection ranges it can measure concentration differences up to 1: 50,000. Further features are the full automatic operation as well as the interfaces to the process control of the plant. Configurable analog outputs and free programmable limit value switches complete the analyzer especially for industrial applications.

	Minimum	Maximum
<b>Ranges NDIR</b>		
CO	0...1,000 ppm	0...100 % Vol.
CO <sub>2</sub>	0...50 ppm	0...100 % Vol.
HC	0...500 ppm	0...1 % Vol. (equiv. C <sub>6</sub> H <sub>14</sub> )
C <sub>3</sub> H <sub>8</sub>	0...1,000 ppm	0...2 % Vol.
CH <sub>4</sub>	0...1 % Vol.	0...100 % Vol.
NO	0...2,000 ppm	0...5,000 ppm
SO <sub>2</sub>	0...1,000 ppm	0...2,000 ppm
<b>Ranges electro-chemical</b>		
O <sub>2</sub>	0...21 % Vol.	
NO	0...2,500 ppm	0...5,000 ppm
<b>Ranges paramagnetic</b>		
O <sub>2</sub>	0...21 % Vol.	

- Gas analysis system for up to 8 (special solution 10) gases, ranges simultaneously
- High-contrast color touch screen, intuitive operation
- Suitable for fully automatic operation in process control and monitoring







## Moisture measuring technology

The TEWS instruments were specially developed for the determination of material moisture in solid products. For this reason, the microwave resonance method offers special advantages such as speed, color and density independence, accuracy, determination of the core moisture, and independence from surface effects.

## Moisture Resonance Prodeure

From TEWS' patented moisture measuring method, which is based on the measurement of two independent parameters correlated with moisture and density, the displacement of a resonance frequency, and the absorability of the resonance peak. For this purpose a product loaded with water is brought into a resonance field. The water influences the field and the field changes are measured and specifically, mathematically prepared.



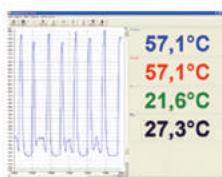
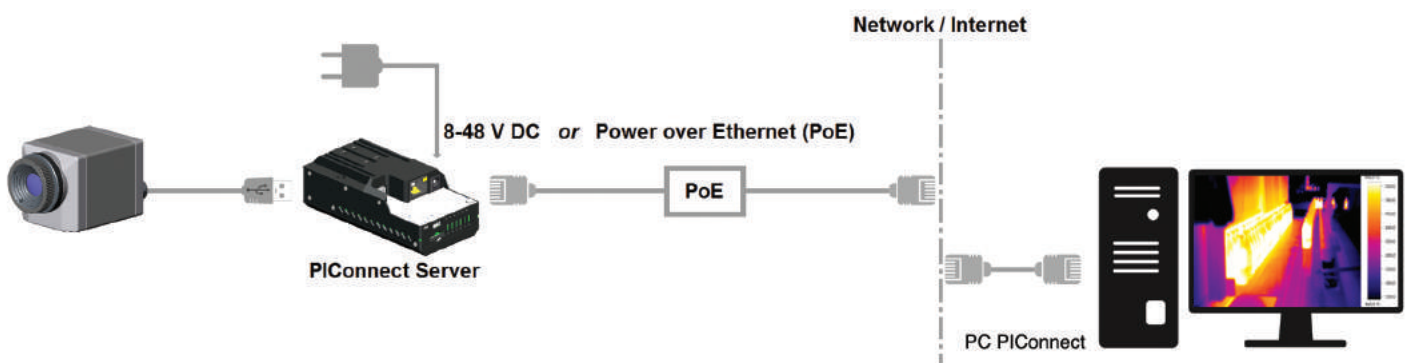
# Infrared Camera

## กล้องถ่ายภาพความร้อนชนิดต่อเนื่อง

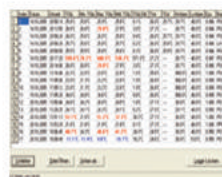


### optris infrared cameras

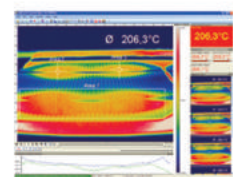
Optris' infrared cameras are fully radiometric stationary thermographic systems with an excellent price-performance ratio. The thermal imaging cameras are connected to a PC via USB and they are immediately ready to be used. Temperature data is displayed through the license-free analysis software optris PIX Connect. The software also includes two SDKs for Windows and Linux as well as drivers for LabVIEW and MATLAB.



The software optris Compact Connect is compatible with all thermometers of the compact as well as the high performance series. It is best suited for the quick and easy documentation of temperature measurement data. When using the optris CT / CT laser, the software even offers the possibility to enter up to 8 different emissivity measurements with different alarm levels.



The software optris Connect is delivered with all portable thermometers and enables a quick and easy parameterization of the devices. The flexible presentation of temperature measurements in a temperature-time diagram or a digital display is only one of the software's many additional features.



With the support of the license-free analysis software optris PIX Connect, the infrared cameras of the optris PI series allow the recording and detailed analysis of thermal image video sequences. By allowing an individual setup of process-related alarm levels, for example, the software helps in the automatic process and quality control. Further, the software includes two SDKs for Windows and Linux as well as drivers for LabVIEW and MATLAB.





Oval Gear Meter



Vortex Meter



CoriolisMaster Meter



Differential Pressure  
Flow Meter



Electromagnetic Meter



Turbine Meter



Nutating disc flow meter



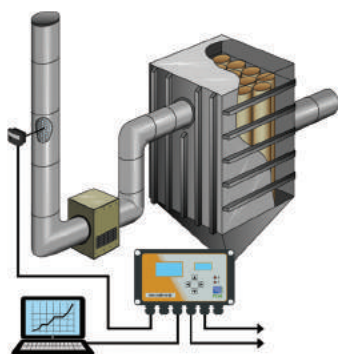
Ultrasonic Flow Meter



	Coriolis Mass Flow Meters	Electromagnetic Meters	Impeller Meters	Disc Meters	Turbine Meters	Oscillating Piston Meters	Oval Gear Meters	Control Valves	Ultrasonic Meters	Vortex Meters	Variable Area Meters	Differential Pressure Meters	Hydraulic Diagnostic Products
Drinking Water		✓	✓	✓	✓			✓	✓	✓			
Waste Water		✓	✓					✓	✓			✓	
Irrigation		✓	✓		✓				✓	✓			
Process Water/ Semiconductor		✓	✓	✓	✓			✓	✓	✓	✓	✓	
Chemicals	✓	✓	✓	✓	✓	✓	✓	✓	✓	✓	✓	✓	
Food	✓	✓		✓	✓	✓		✓	✓				
Oil/Automotive Fluids	✓		✓	✓	✓		✓	✓	✓		✓		
Petrol			✓	✓	✓		✓	✓	✓		✓		
Pharmaceutical/ Biotechnology		✓	✓			✓		✓	✓	✓		✓	
HVAC		✓	✓	✓	✓	✓			✓	✓		✓	
Industrial	✓	✓	✓	✓	✓	✓	✓	✓	✓	✓	✓	✓	✓
Concrete Batching		✓	✓	✓									
Test & Measurement	✓				✓			✓			✓	✓	✓
Oil & Gas					✓			✓	✓			✓	
Petrochem					✓			✓		✓		✓	
Mining					✓			✓	✓		✓		✓
Machine Tools					✓				✓		✓		✓
Power Generation	✓	✓							✓			✓	
Aerospace					✓			✓			✓		✓
Hydraulic/Fluid Power					✓				✓		✓		✓

Badger Meter provides solutions for a variety of unique flow measurement and control challenges, serving a wide array of industries. Use this chart as a first step in matching our flow technologies with your application.





## Filter Leak Monitors

Filter Leak Monitors, track changes in emissions from particulate arrestment plant and provide a tool to minimise emissions and monitor for arrestment plant malfunction (e.g. damaged filtration media). PCME's range includes approved Filter Leak Monitors where quality assurance features are required – performance standards are similar to ASTM standard D7392-07 for Bag Leak Detectors Instruments not verified under an approval scheme retain a variety of quality assurance and functionality options.



### LEAK ALERT 65 - 02

- High temperature for stack temperatures up to 400°C
- Fully insulated PTFE coated option for conductive dust or humid flue gas applications
- Acid resistant adaptors for corrosive applications
- Alarming: 1x relay output or RS232/RS485 data output option for Modbus networking, PC interface



### LEAK ALERT DM 210

- Stack temperature ranges 0-250°C, 0-400°C
- 316 stainless, or fully insulated PTFE coated option for conductive dust or humid flue gas application
- Alarming: Local and via 2x relay outputs
- RS232/RS485 data output option for Modbus networking, PC interface



### LEAK ALERT DM 80

- 4 digit display and set up buttons with menu selectable items
- Stack temperature ranges 0 - 250°C, 0 - 400°C
- Alarming: Local and via 2 x relay outputs
- RS232/RS485 data output option for Modbus networking, PC interface



### LEAK ALERT DM 75

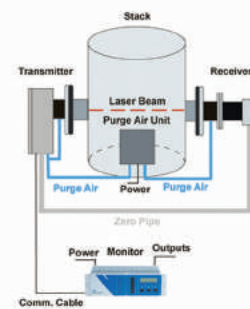
- Built in LED display
- Stack temperature ranges 0 - 250°C, 0 - 400°C
- Alarming: Local and via 2 x relay outputs
- RS232/RS485 data output option for Modbus networking, PC interface



### LEAK ALERT DM 73

- Stack temperature ranges 0 - 250°C, 0 - 400°C
- Alarming: Local and via 2 x relay outputs
- RS232/RS485 data output option for Modbus networking, PC interface





Product range for dust and opacity monitoring  
TÜV approved and US EPA compliant models  
Unique laser based technology  
25 years of experience in production

Advantages of using optical reference path:  
Dirt in optics is eliminated from the measurement values,  
providing real long term accuracy and stability  
Automatic calibration and zero 40 times per second  
Low need of maintenance

## MEASUREMENT FUNCTIONS AND RANGES

Function	Range	Resolution
Opacity %	0 ... 99.9 %	0.1 %
Optical density	0 ... 3.0	0.001 D
Mass / g/m <sup>3</sup>	0 ... 100.0	1 mg/m <sup>3</sup>

## CALIBRATION AND ZERO DRIFT

PS-1/Test time	1 h	24 h	336 h
Calibration drift	< 0.2 %	< 0.2 %	< 0.2 %
Zero Drift	< 0.2 %	< 0.2 %	< 0.2 %





## MODEL 2010BR

- Trace oxygen from 0.05 ppm up to 25.0%Vol.
- Ultra-fast come-down  $H_2S$  resistant sensor up to 10 ppm  $H_2S$  resistant standard, 500 ppm  $H_2S$  resistant optional
- Hazardous area : CSA approved Class 1 Div. 1 Group BCD
- Fully Programmable alarm logic with relay contacts
- Isolated 1-5V or 4-20mA output user selectable
- 10 user-selectable analog output ranges
- Complete ModBus RTU supported over RS485
- Data logging of oxygen readings, temperature
- Calibration factor indicates remaining sensor life



## MODEL 2001RS

- Trace oxygen from 0.05 ppm up to 25.0%Vol.
- Ultra-fast come-down sensor
- Positive pressure sample
- Sensor sealed off on power failure : protects against air contamination
- Fully Programmable alarm logic with relay contacts
- Isolated 4-20mA output
- 10 user-selectable analog output ranges
- Complete ModBus RTU supported over RS485
- Data logging of readings, temperature
- Calibration factor indicates remaining sensor life



## MODEL 221R

- Waterproof enclosure may be washed down
- Provides a warning alarm at 19.5%Vol. / 20.0%Vol.
- Alarm set points set per OSHA standards
- 10 year expected sensor life
- Virtually unaffected by temperature change
- Battery backed up against power failure
- 95dBA danger warning audible alarm
- Red backlit oxygen display
- Remote indication of readings and alarms
- UL 61010-1 approved and CE Marked for European use.



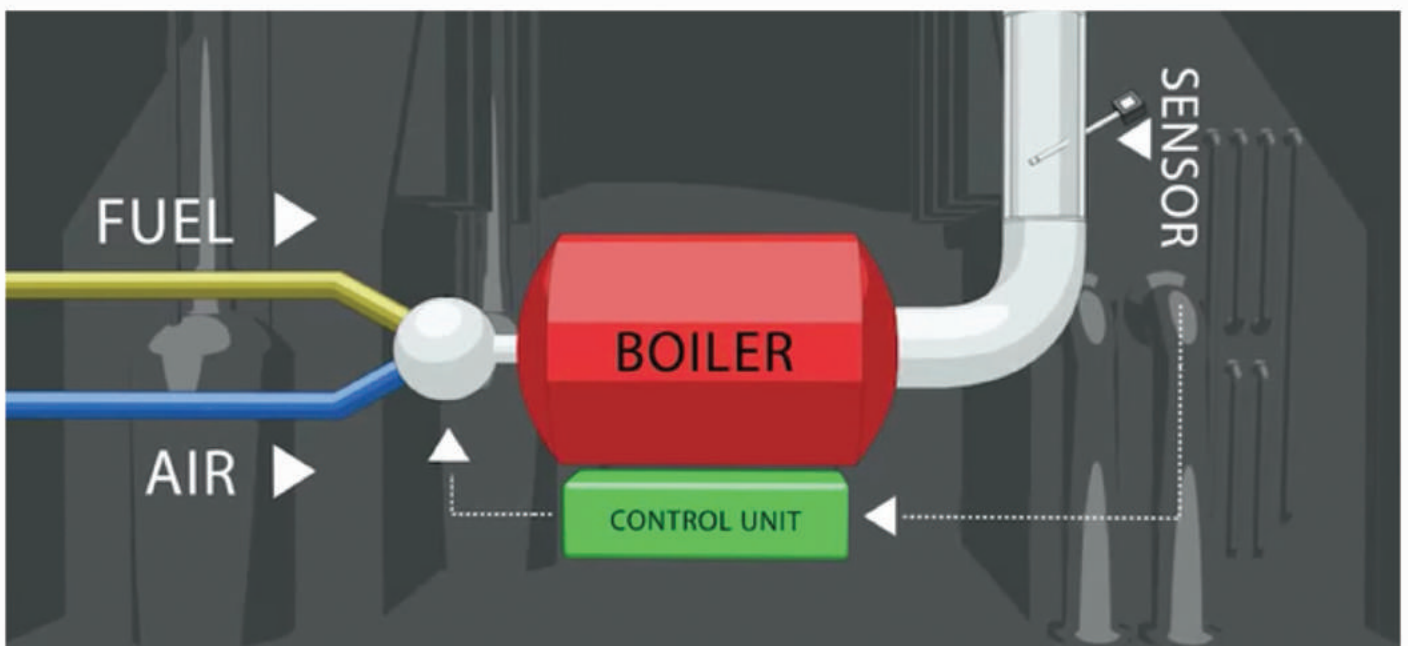
# Oxygen Analyzer for Combustion Efficiency

เครื่องวิเคราะห์ก๊าซออกซิเจนสำหรับหม้อไอน้ำ



## Technical Specifications

Power supply	24VDC $\pm 10\%$ Limited Power Supply
Power consumption	700 mA maximum @ 24VDC
Analog outputs	Single or Dual 4 - 20mA
Measuring ranges (oxygen)	0 - 25% vol. O <sub>2</sub>
Output ranges (pressure)	750 - 1,260 mbar absolute
Relays (SPST, N/O as std.)	1 x system alarm (SPST) 1 x user configurable O <sub>2</sub> set point alarm
Digital communications	RS485 Modbus RTU protocol
Display	16 character, 2-line, backlit







## Specifications

Model	5301	5501
Size Range	0.3 to 25 micron	0.5 to 25 micron
Size Channels	Factory calibrated at 0.3, 0.5, 1.0, 3.0, 5.0, 10.0 $\mu\text{m}$ variable binning	Factory calibrated at 0.5, 0.7, 1.0, 3.0, 5.0, 10.0 $\mu\text{m}$ variable binning
Flow rates	0.1 CFM (2.83 LPM)	0.1 CFM (2.83 LPM)
Internal Vacuum Pump	Option	Option
Number of Channels	6	6
Communication Modes	Ethernet, USB	Ethernet, USB
Optional Communication	Wireless 802.11 RS485 or RS232	Wireless 802.11 RS485 or RS232



มีรุ่นสำหรับใช้งานใน hazardous area



## TRANSMITTER FOR PRESSURE & TEMPERATURE ATM.1ST/T

Pressure Accuracy:  $\leq \pm 0.1\%$  FS  
Pressure ranges from 1 to 360 psi  
Temperature range: -40 to 300° F  
Temperature Accuracy:  $\pm 2^\circ$  F  
High overload: 3 x FS minimum  
4-20 mA, 3 or 4 wire Output



## 4 - 20 mA PRESSURE TRANSMITTER ATM.1ST

Total Error Band: typical  $\leq 0.3\%$  FS  
Compensated temperature: -40 to 255° F  
Full scale ranges from 1 to 15,000 psi  
Gauge, absolute or sealed gauge  
Accuracies of  $\leq \pm 0.05$  or 0.1% FS available  
4 to 20 mA output



## 4-20 mA DEPTH / LEVEL TRANSMITTER ATM.1ST/N

Total Error Band: typical  $\leq 0.3\%$  FS  
Fully submersible, 1" diameter  
Ranges 20" WC to 360 psi  
Titanium or 316L SS construction  
Polyurethane cable - PE/FEP option  
Many installation options available



# IoT-Enable Architecture & Platform



## EcoStruxure Platform Capabilities

These capabilities allow the discovery and onboarding of connected products, configuration, and messaging with device data; the ability to perform local analytics; and easy configuration and upgrades at a device level.



## Interoperable Foundation for Smart Operations

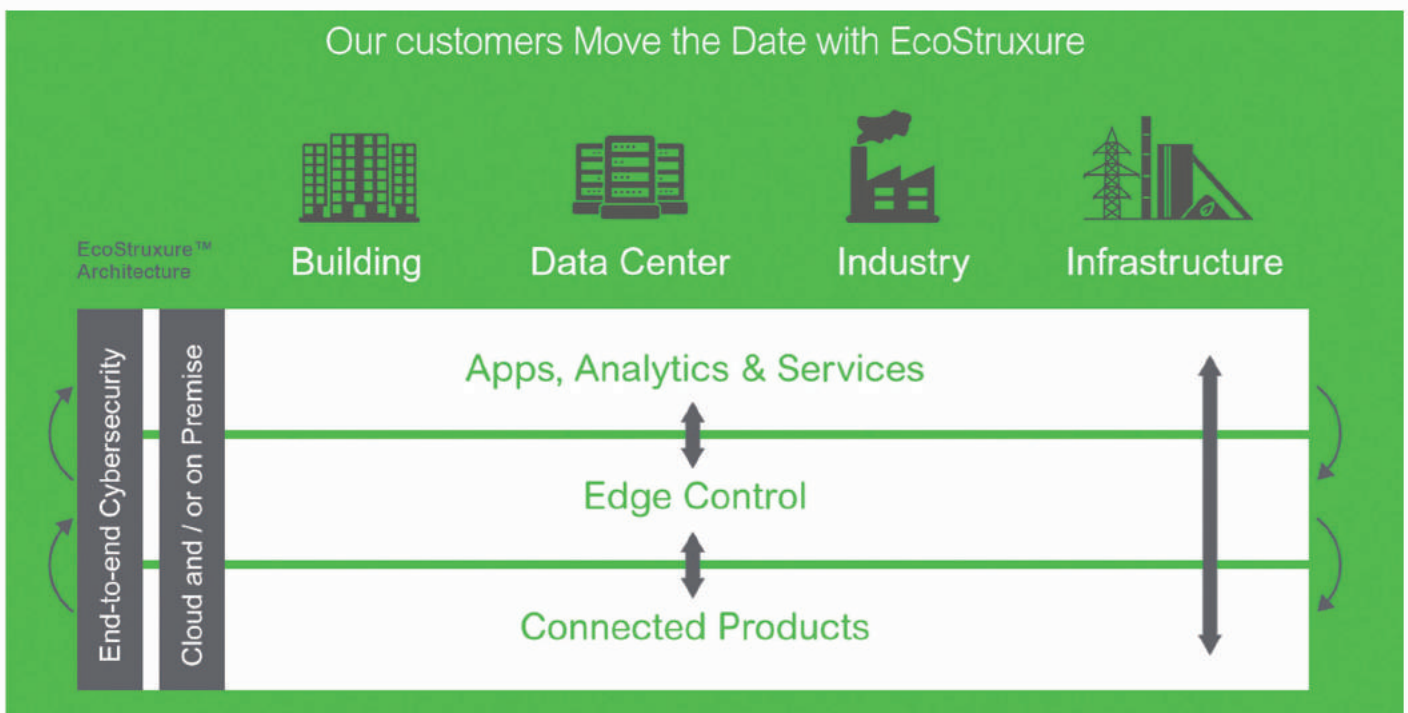
This suite of hardware-agnostic connectivity functionality, drivers, tool kits, and templates enables customers to aggregate both process information and manufacturing and equipment data.



## Infrastructure for Cloud-Connected Digital Services

Powers the delivery of cloud-based connected apps, analytics, services for control, monitoring, remote connectivity, and asset management, all built on top of Microsoft Azure IoT suites. Schneider Electric leverages this infrastructure to deliver a full suite of high value-added digital services to our customers.

## Our customers Move the Date with EcoStruxure

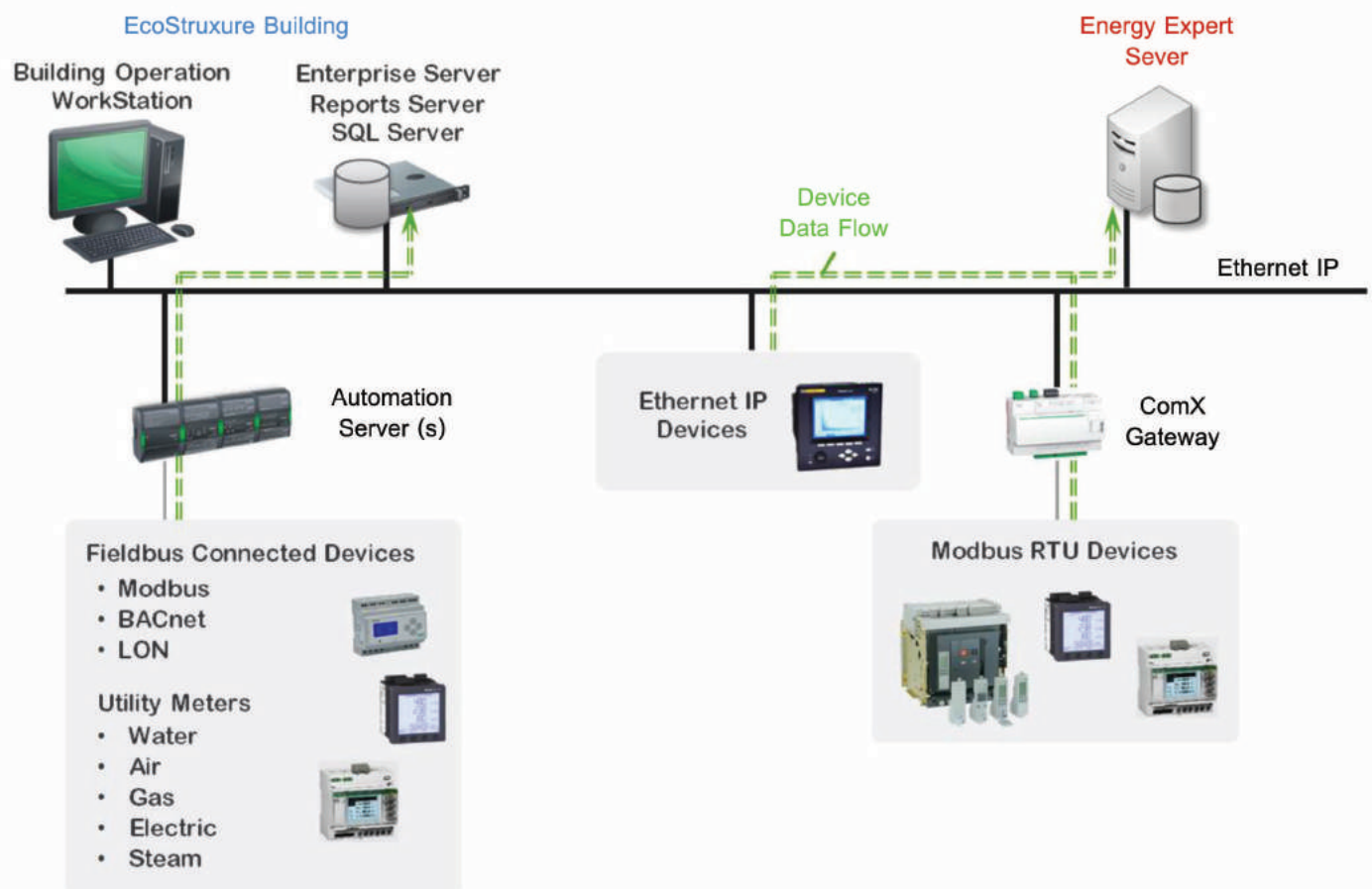


# Smart Energy Management for Any Size Building

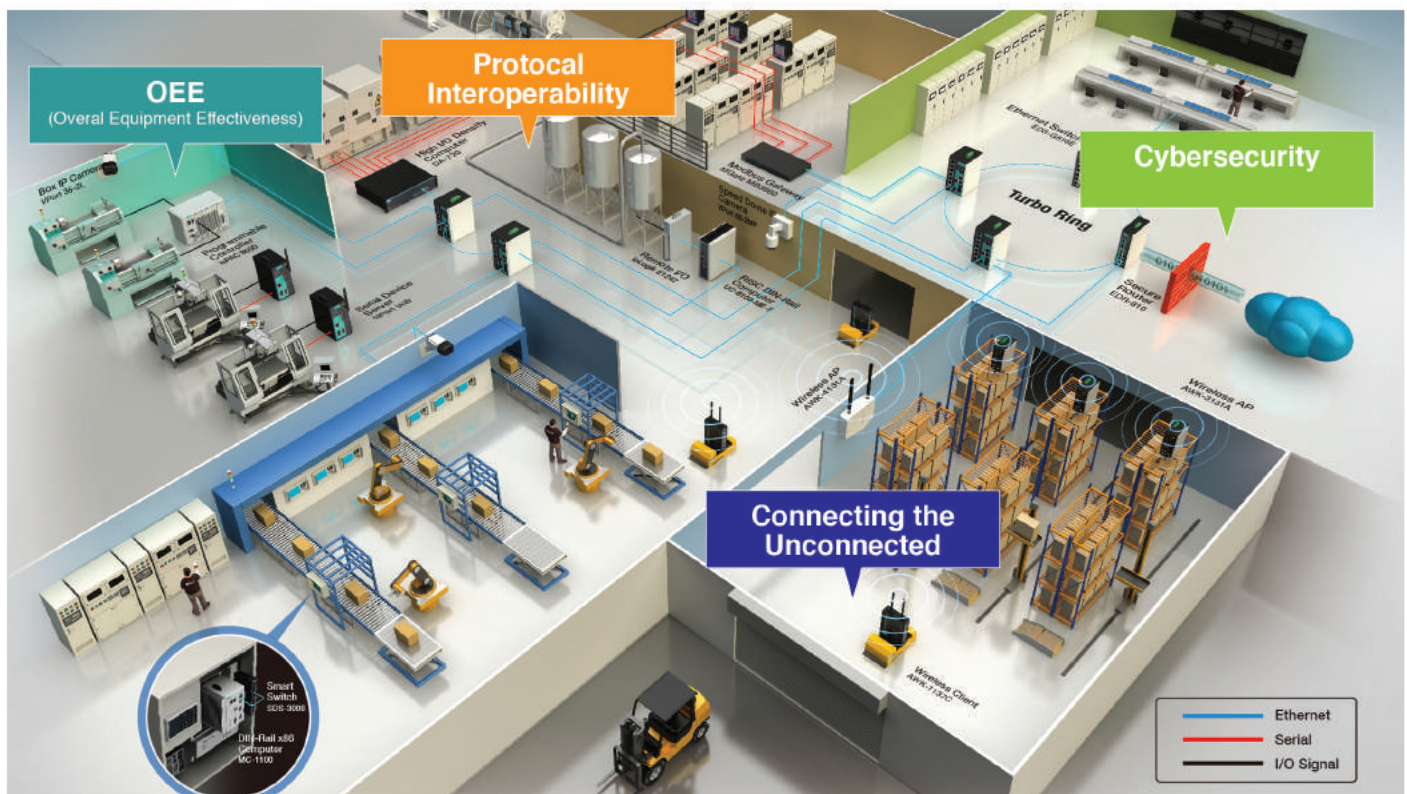


Smart energy management for any size building is not only available.  
It's scalable through Schneider Electric's building solution portfolio:

Simple, yet efficient HVAC management through application-specific room controllers. Wireless technology for central visibility of HVAC systems through EcoStruxure Building Expert. Integrated lighting control and occupancy sensors ensures proactive energy management. Visibility and control across your multi-site enterprise via cloud-based options. Scalability for seamless integration into larger building management systems. Field Services offers reporting, analytics and optimization strategies. Full integration of HVAC and lighting into a hotel's property management system for guestroom control.







### Industry 4.0 for Smart Connectivity in Factories

To increase production efficiency and reduce system downtime, smart factories rely on Industry 4.0 technology for connecting sensors and other devices to collect and analyze data and control equipment. As data accuracy is the key to achieving the goals of a smart factory, a reliable and secure data connection and acquisition infrastructure is a prerequisite. A smart factory solution must cater to the following four requirements :

- The ability to connect to all devices, including those that were not part of the traditional factory architecture
- Protocol interoperability among different devices
- Maximum protection against cyberattacks
- An architecture that maximizes overall equipment effectiveness (OEE)

### Technology Behind Our Solution

#### Efficient OT/IT Protocol Interoperability



Multi-Protocol Support : I/O Data Acquisition and Protocol Conversion



ThingsPro : Intelligent Data-Acquisition Solution

#### Seamless Connectivity Solutions



Turbo Roaming : Rapid Handover Time for WLAN Clients



AeroMag : Error-Free WLAN Configuration for Machines

#### Protection of Critical and Secure Remote Access



MX-AOPC Suite : Active Data Acquisition and Automatic Data Integrity Check



Secure Remote Connection : Cloud-Based Connection Management Platform

#### Overall Equipment Effectiveness (OEE)



MX-AOPC Suite : Active Data Acquisition and Automatic Data Integrity Check



V-On™ : Network Optimization for Non-Stop Operations in PLC Systems



23





## Process Monitoring Solutions

**ENTECH**

Difference For Greater Value

ENTECH INDUSTRIAL SOLUTION CO., LTD.  
Tel : 0 2779 8888 info@entech.co.th



www. entech.co.th  
Entechfanpage  
@Entech