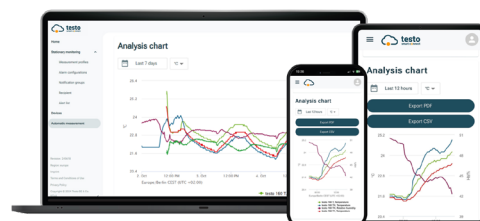


Monitoring system testo Smart Connect

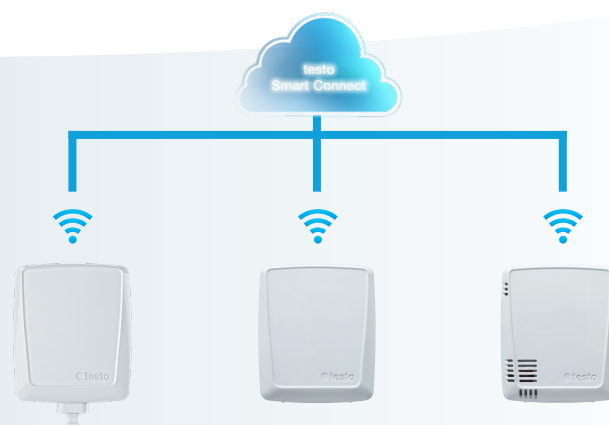
testo 160 – Online data
logger system for monitoring
temperature, humidity, lux and UV
radiation



Limit value violation alarms by push notification, e-mail or (optionally) SMS

Connection to the testo Smart App: Simple commissioning, push alarms and dashboard

Automatic measurement value documentation in the testo Smart Connect Cloud



The payable Testo Data Monitoring Licence is required to use the system.



The testo 160 online data loggers are part of the testo 160 online data logger system. They record measurement values (temperature and humidity, lux and UV) and send them directly to the testo Smart Connect Cloud via a WLAN connection.

If limit values are exceeded, the testo Smart App alerts you directly via push notification of limit value violations. Alternatively, you can be notified by email or SMS.

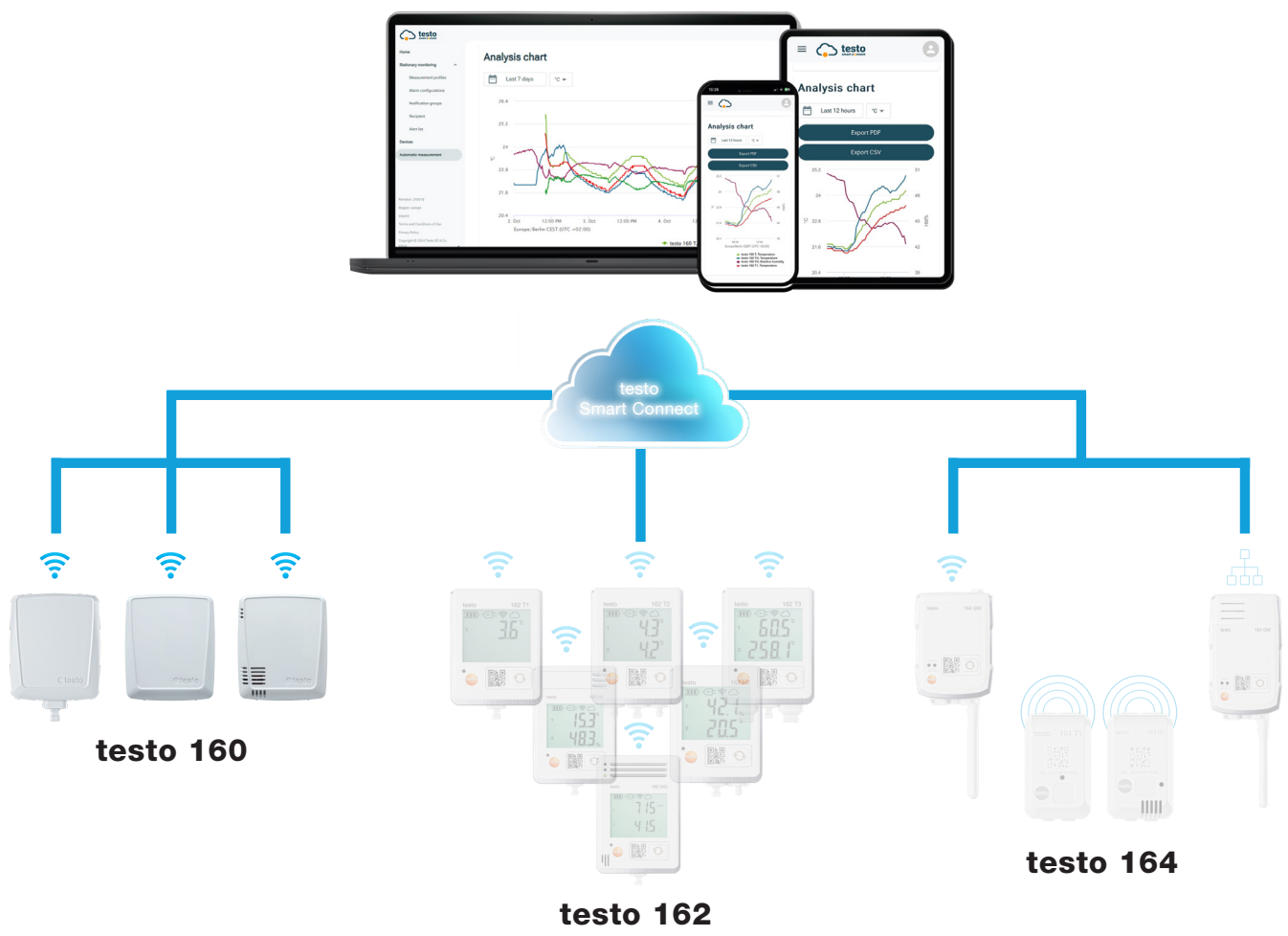
You can access all measurement data and analysis functions anytime and anywhere with your internet-enabled smartphone, tablet, or PC.

A valid license must be purchased to operate the online data loggers in testo Smart Connect (Data Monitoring License).

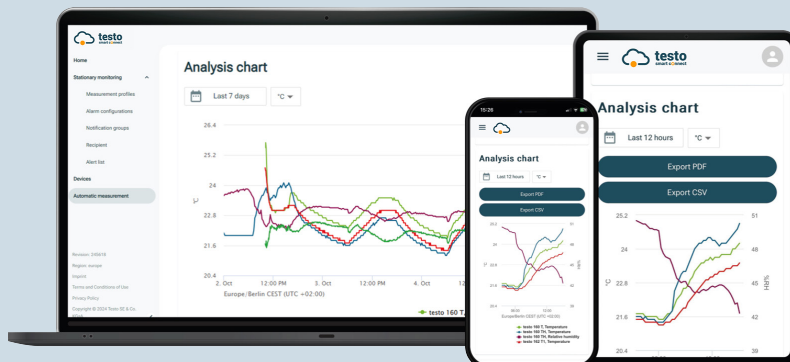
How indoor climate monitoring works with the **testo 160 online data logger system**

The testo 160 online data logger system consists of the hardware components (testo 160, testo 162, testo 164), testo Smart Connect and testo Smart App. testo Smart Connect is the central data platform. Measured values can be viewed and analyzed there.




The products testo 160, testo 162 and testo 164 offer you maximum flexibility thanks to their wide range of variants and can be easily combined and expanded in your Testo account.



Automated measurement monitoring. Thanks to cloud connection.



With the online data loggers connected to testo Smart Connect, your indoor climate monitoring takes place effortlessly in the background. You don't have to do anything yourself – the process is fully automated. You can access all measurement data in the cloud via smartphone, tablet or PC. All you need is a valid license and to set up the system once: configure the online data loggers and set limit alarms. The rest takes care of itself.

-  **Central control for monitoring and managing all measuring points**
-  **Automatic transmission and documentation of readings, alarms when limit values are exceeded**
-  **All readings can be accessed anytime and anywhere**
-  **Link to the testo Smart App for further smart benefits**

**Check out
testo Smart Connect
now!**



Order no. Data Monitoring License: 0526 5161

Order data for online data loggers

testo 160 T

testo 160 T - Online data logger with integrated temperature sensor



Order no. 0572 2019

testo 160 TH

testo 160 TH - Online data logger with integrated temperature and humidity sensor



Order no. 0572 2021

testo 160 E

testo 160 E - Online data logger with 2 connections for temperature and humidity probes, Lux probe or UV radiation and Lux probe



Order no. 0572 2022



Technical data for testo 160 online data loggers

	Online data logger testo 160 T	Online data logger testo 160 TH	Online data logger testo 160 E
Temperature measurement			
Sensor type	NTC internal	NTC internal	see connectable probe
Measuring range	-30 to +50 °C	-10 to +50 °C	
Accuracy	±0.5 °C	±0.5 °C	
Resolution	0.1 °C	0.1 °C	
Humidity measurement			
Sensor type	-	NTC internal	see connectable probe
Measuring range		0 to 100 %RH (non-condensing)	
Accuracy	-	±2 %RH at +25 °C and 20 to 80 %RH ±3 %RH at +25 °C and < 20 %RH and > 80 %RH ±1 %RH hysteresis ±1 %RH drift per year	
Resolution	-	0.1 %RH	
Additional measurements			
	-	-	Lux and UV measurement possible via external probe. See probe technical data
Certificates/Approvals			
	EN12830	-	-
WLAN			
Standard	802.11 b/g/n		
Security	WPA2 Enterprise: EAP-TLS, EAP-TTLS-TLS, EAP-TTLS-MSCHAPv2, EAP-TTLS-PSK, EAP-PEAP0-TLS, EAP-PEAP0-MSCHAPv2, EAP-PEAP0-PSK, EAP-PEAP1-TLS, EAP-PEAP1-MSCHAPv2, EAP-PEAP1-PSK, WPA Personal, WPA2 (AES), WPA (TKIP), WEP		
General information			
Operating temperature	-30 to +50 °C	-10 to +50 °C	
Storage temperature	-30 to +60 °C	-20 to +50 °C	
Protection class	IP65	IP20	
Measuring cycle & communication cycle	1 min to 24 h		
Memory	32,000 readings (sum of all channels)		
Voltage supply	4 x AAA alkaline manganese batteries 1.5 V (permanent power supply possible with mains unit accessory)		
Battery life (measurement & communication cycle of 15 min)	1.5 years		
Dimensions	76 x 64 x 22 mm		
Weight (including batteries)	94 g		96 g

Accessories

	Order no.
Deco-cover for testo 160	0554 2006
Wall bracket for testo 160	0554 2013
Extension cable (0.6 m) for testo 160 probes	0554 2004
Extension cable (2.5 m) for testo 160 probes	0554 2005
Display cabinet bushing for testo 160	0554 2016
1x Alkaline manganese AAA battery down to -10 °C	0515 0009
4x Lithium AAA batteries below -10 °C	0515 0160
Power supply unit for testo online data loggers	0572 2020
ISO calibration certificate (temperature) -8 °C, 0 °C, +40 °C (for testo 160 TH / testo 160 E)	0520 0171
ISO calibration certificate (temperature) +15 °C, +25 °C, +35 °C (for testo 160 IAQ)	0520 0076
ISO calibration certificate (luminous intensity), calibration points 0; 500; 1000; 2000; 4000 lux	0520 0010

Probes

Probe type	Temperature and humidity probe testo 160 E	Lux and UV sensor testo 160 E	Lux sensor testo 160 E
			
Measuring range	-10 to +50 °C 0 to 100 %RH	0 to 20,000 lux 0 to 10,000 mW/m ²	0 to 20,000 lux
Accuracy	±0.5 °C ±2 %RH at +25 °C and 20 to 80 %RH ±3 %RH at +25 °C and < 20 %RH and > 80 %RH ±1 %RH hysteresis ±1 %RH drift per year	DIN 5032-7 class C-compliant. ±3 lux or ±3% of reference (DIN 5032-7 class L) ±5 mW/m ² or ±5% of m.v. (based on external reference)	DIN 5032-7 class C-compliant. ±3 lux or ±3% of reference (DIN 5032-7 class L)
Order no.	0572 2156	0572 2157	0572 2158

Deco-cover

For exhibitions in rooms with coloured walls or backgrounds, the deco-covers of the data loggers can be individually designed by painting or decorating. This places

the logger in the background, and does not distract from the exhibits.

